

CompStat Dashboard



► Use statistics to identify crime trends and determine how to utilize agency resources

The CompStat Dashboard module allows agencies to maximize Spillman software by calculating trends and patterns using information in the Spillman database, then presenting the information in an easy-to-analyze format. Agencies can use the dashboard to spot trends, make informed decisions, and monitor the day-to-day health of their organizations. Comparing statistics over user-defined periods of time allows agencies to evaluate the success of crime-fighting strategies and make informed decisions to improve public safety.

► advantages

- View comprehensive agency statistics without running multiple reports.
- Calculate and monitor changes in crime, quality-of-life, traffic and accident rates.
- Pinpoint problem areas, reducing or eliminating the need for random patrols.
- Identify areas where personnel are meeting or exceeding goals and provide positive recognition.

► key features

► Main Dashboard

View a full array of agency statistics at a glance using the Main Dashboard. The Quick Glance column displays exactly how many crimes, quality of life offenses, accidents, and traffic citations have occurred in your jurisdiction over period of time that you define. The CompStat Dashboard module allows you to customize your window of time, enabling you to compare statistics from week-to-week, month-to-month, or multiple-month periods.

► Crime Dashboard

See which locations are being targeted by crime and use the information to zero in on problem areas. The crime types are defined as Part I and Part II crimes by federal reporting policies and can be modified by your agency. By clicking on one of the categories of crime, you can access the Details Screen, a page of in-depth information that allows you to view and analyze each crime in more detail. You can see whether each type of crime increased or decreased over a designated time period, where and when incidents occurred, and which personnel responded to them.

► Quality-of-Life Dashboard

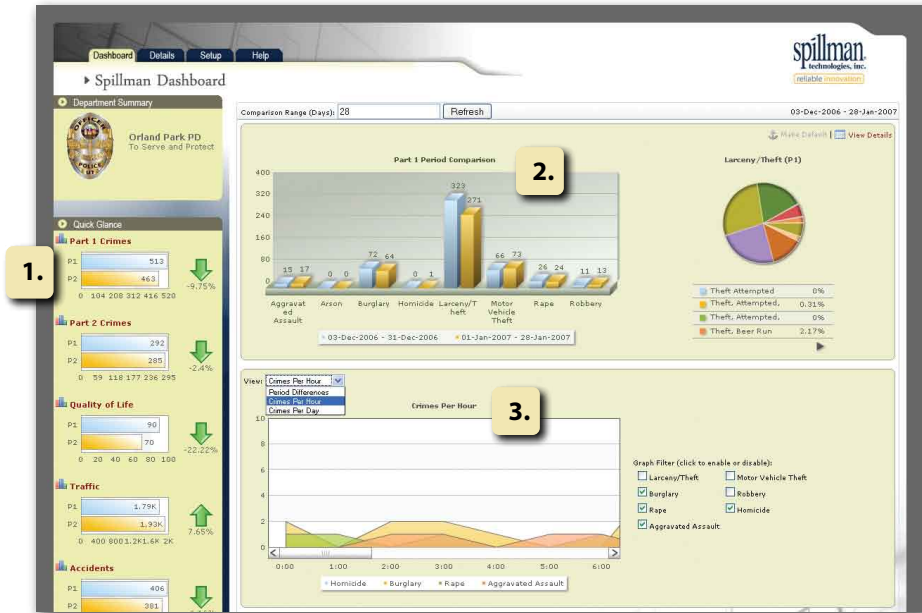
Analyze the rate and location of events that impair the quality of life in your community, such as gang problems, graffiti, and animal attacks. Offenses can be customized to reflect those tracked by your agency. Graphs reveal whether quality of life factors have increased or decreased over a designated time period. You can access detailed information about each quality of life crime, including the date, time, and location.

► Traffic and Accidents Dashboard

The Traffic and Accidents Dashboard enables you to see at a glance whether accidents and citations have increased or decreased over a given time period. You can use the dashboard to see how many injuries or fatalities occurred in each accident and the resulting monetary damage. The dashboard also shows the most frequent places for citations and accidents, allowing you to identify problem areas within your community and target patrols to accident hotspots.

► Crime Dashboard

1. The Quick Glance column makes it easy to see whether the rate of crime, quality-of-life factors, traffic citations and accidents are increasing or decreasing in your jurisdiction.
2. See how crime categories have increased or decreased over a user-defined comparison range. A pie chart makes it easy to see which crimes occurred most frequently.
3. See how the rate of crime changes from day to day, hour to hour, or between two periods of time using the Crimes Per Day graph. The graph filter allows you to add or remove types of crimes from the graph.



► other records modules

- Law Records
- Evidence Management
- Traffic Information
- Civil Process
- Licenses and Permits
- Imaging
- Powned Property
- Pin Mapping
- State Link
- Vehicle Impound
- Evidence Bar Code & Audit Interfaces

► about spillman

Spillman Technologies meets the individual needs of public safety professionals with a full suite of software solutions. The software is installed at more than 800 agencies nationwide.



spillman
technologies, inc.

reliable innovation

4625 West Lake Park Blvd.
Salt Lake City, Utah 84120
Toll-free: 800.860.8026
FAX: 801.902.1210
Email: info@spillman.com
www.spillman.com