



Provide your community with access to detailed crime statistics

Using the Community Dashboard module, agencies can share detailed crime statistics with the public. The dashboard allows the public to view the rate of incidents and offenses and examine crime rates within their community, as well as identify crime hotspots by viewing incidents on Google Maps™. The dashboard offers complete customization when deciding which crimes, locations, and date ranges are shown.

▶ Advantages

- Provide the public with access to information about incidents and offenses in your community.
- Enable the public to compare crime statistics over pre-defined periods and view incidents by day, hour, or location.
- Allow your community to see crime hotspots by viewing incidents and offenses on Google Maps.
- Customize the dashboard with specific crime categories and your agency's information.

▶ Key Features

Community Access to Information

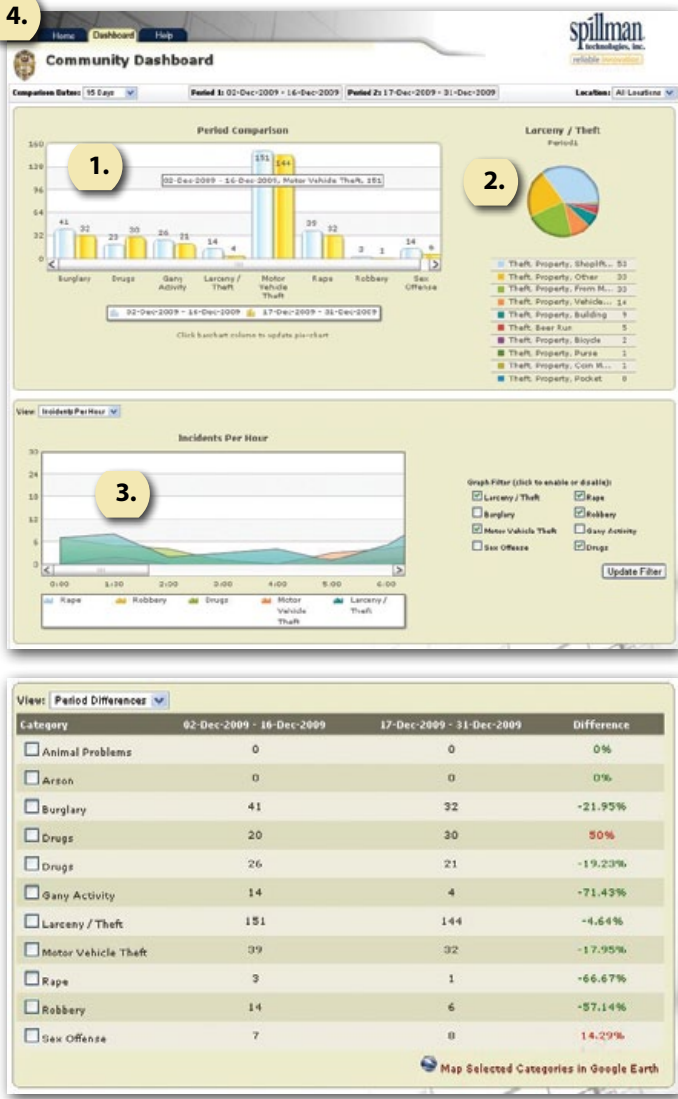
Provide your community with crime rates and statistics based on more than 250 Spillman reports. The public can view incidents and offenses, examine specific types of incidents, and see how crime has increased or decreased over agency-determined periods of time. They can also see how frequently crime occurs within zones like schools, neighborhoods, business districts, or other locations defined by your agency. A customizable period comparison chart provides users with a visual representation of crime for the days and location selected, while a pie chart allows your community to see a breakout of each crime category. The public can also view the number of incidents by day or hour on a line graph.

Incident Mapping

The Community Dashboard module enables viewers to see incidents or offenses on Google Maps, allowing them to see crime hotspots and determine their proximity to events. You can choose to show partial map addresses or no addresses to protect the privacy of residents where the incidents occurred.

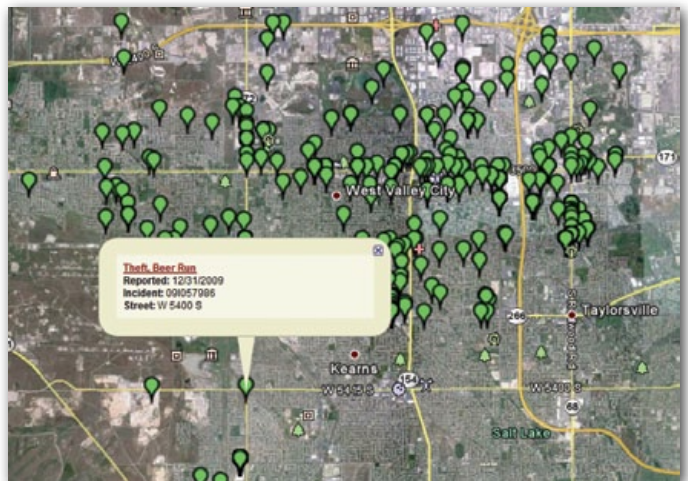
Customizable Dashboard Features

Customize the Community Dashboard module to meet your agency's specific needs. The dashboard gives your agency complete control in determining what information is displayed for public viewing. You can choose which incident categories are shown, decide whether to display incidents or offenses, define comparison dates and locations, and add your agency's name and badge to the dashboard header.



See how crime categories have increased or decreased over a specific period of time. Green signifies a decrease, while numbers in red signify an increase.

1. View increases or decreases in crime across pre-determined date ranges on a bar graph.
2. Examine how frequently specific types of incidents occur within a date range using a pie chart.
3. See the number of incidents per hour or per day. Users can put a check-mark in each incident category that they want displayed on the line graph.
4. Customize the dashboard with your agency's name and badge.



View crime hotspots using Google Maps™. By hovering over an incident, you can see the incident type, date, and the proximate address.



reliable innovation

4625 West Lake Park Blvd.
Salt Lake City, Utah 84120
800.860.8026
info@spillman.com
www.spillman.com

About Spillman

For nearly 30 years, Spillman Technologies has provided public safety professionals with state-of-the-art software solutions backed by unparalleled customer service. Today, Spillman's integrated public safety software is used by more than 950 police departments, sheriff's offices, communications centers, fire departments, and correctional facilities nationwide.



Police



Sheriff



Communications



Fire



Corrections